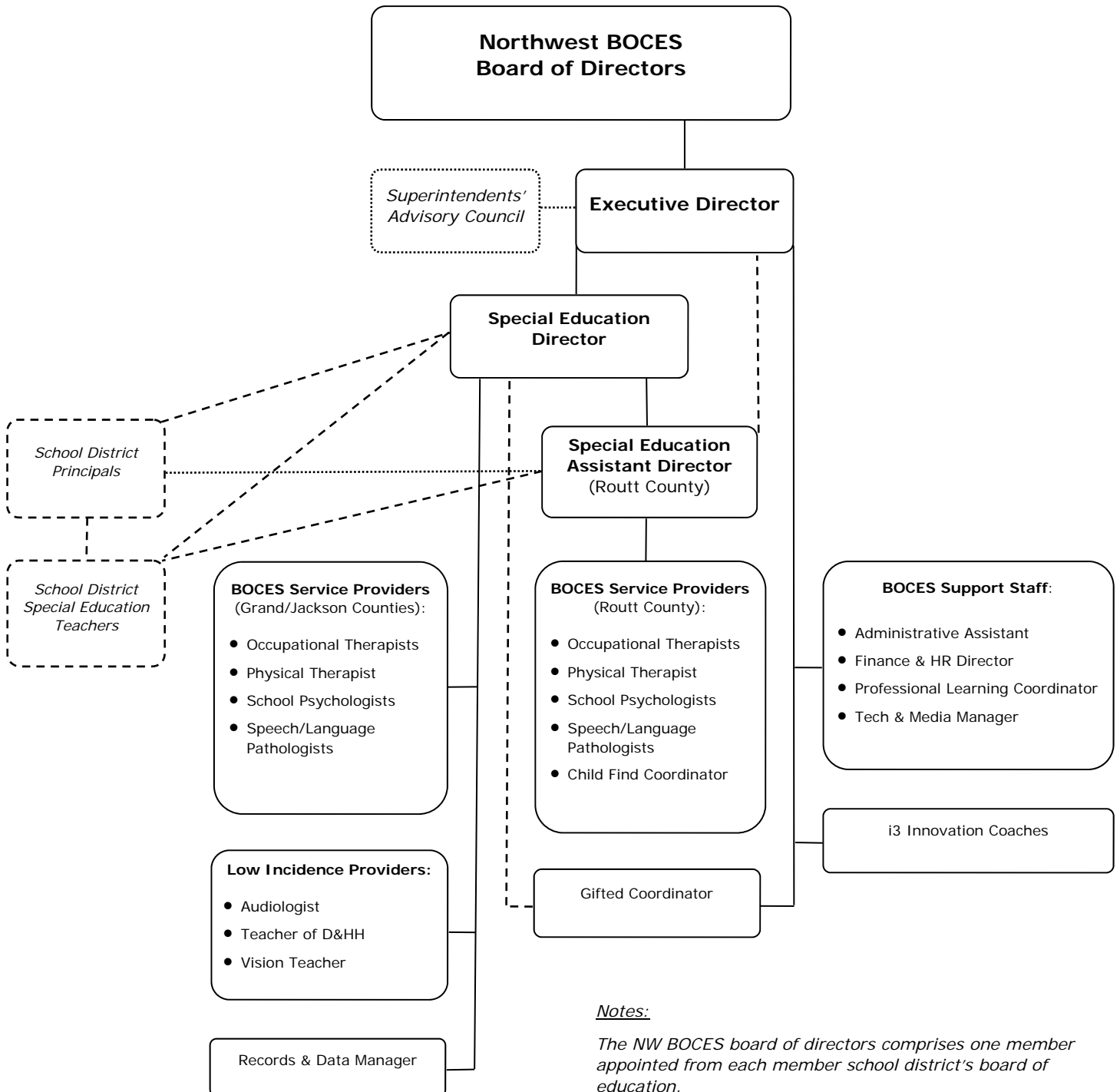


Northwest BOCES Organization Chart



Notes:

The NW BOCES board of directors comprises one member appointed from each member school district's board of education.

NW BOCES is the "Administrative Unit" for its member school districts (East Grand, Hayden, North Park, South Routt, Steamboat, West Grand), and is legally responsible for special education functions in the districts. School districts employ special education teachers and aides; NW BOCES employs special service providers and provides oversight.

- Line authority
- - - - - Functional authority
- Advisory relationship (bidirectional)